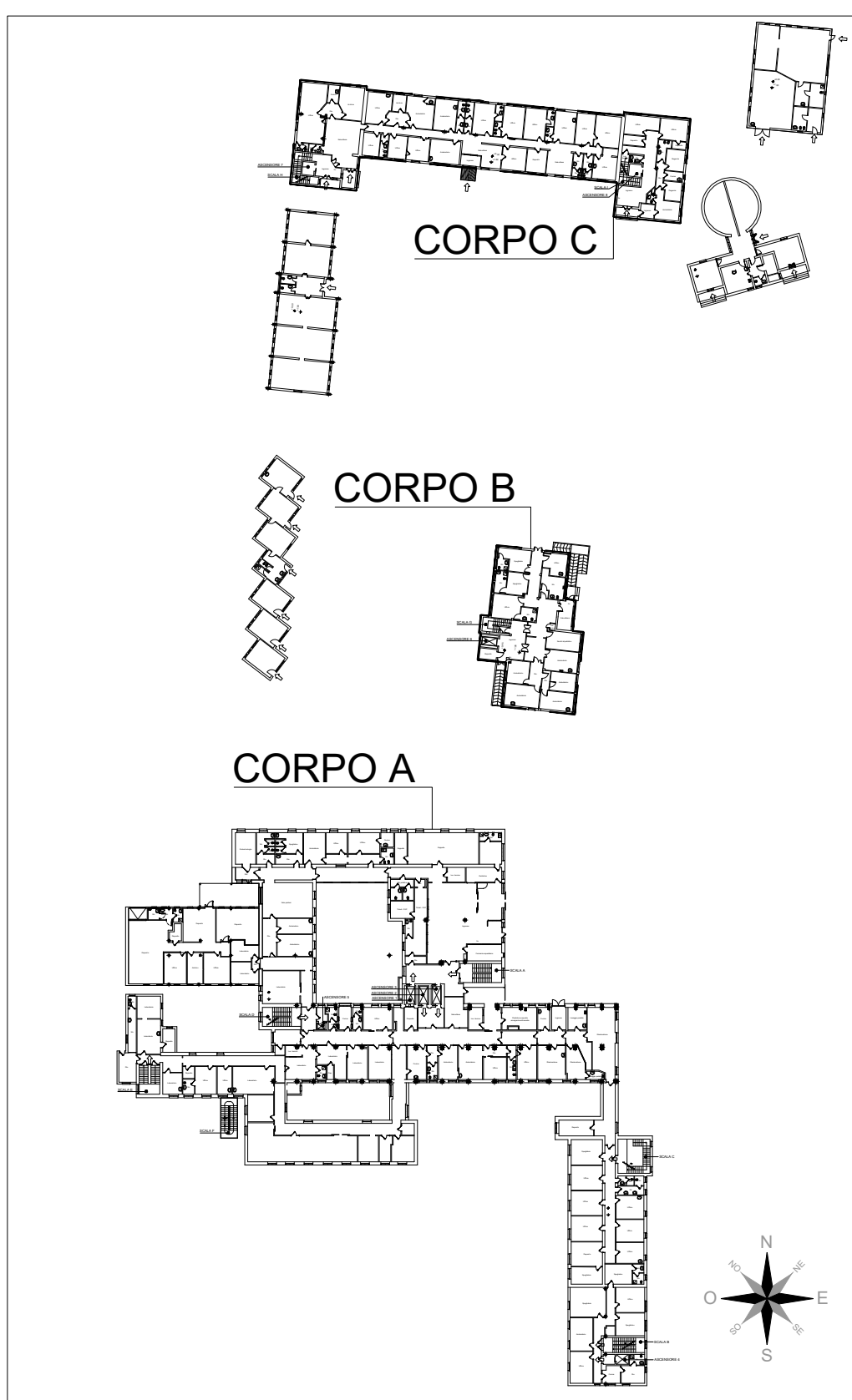
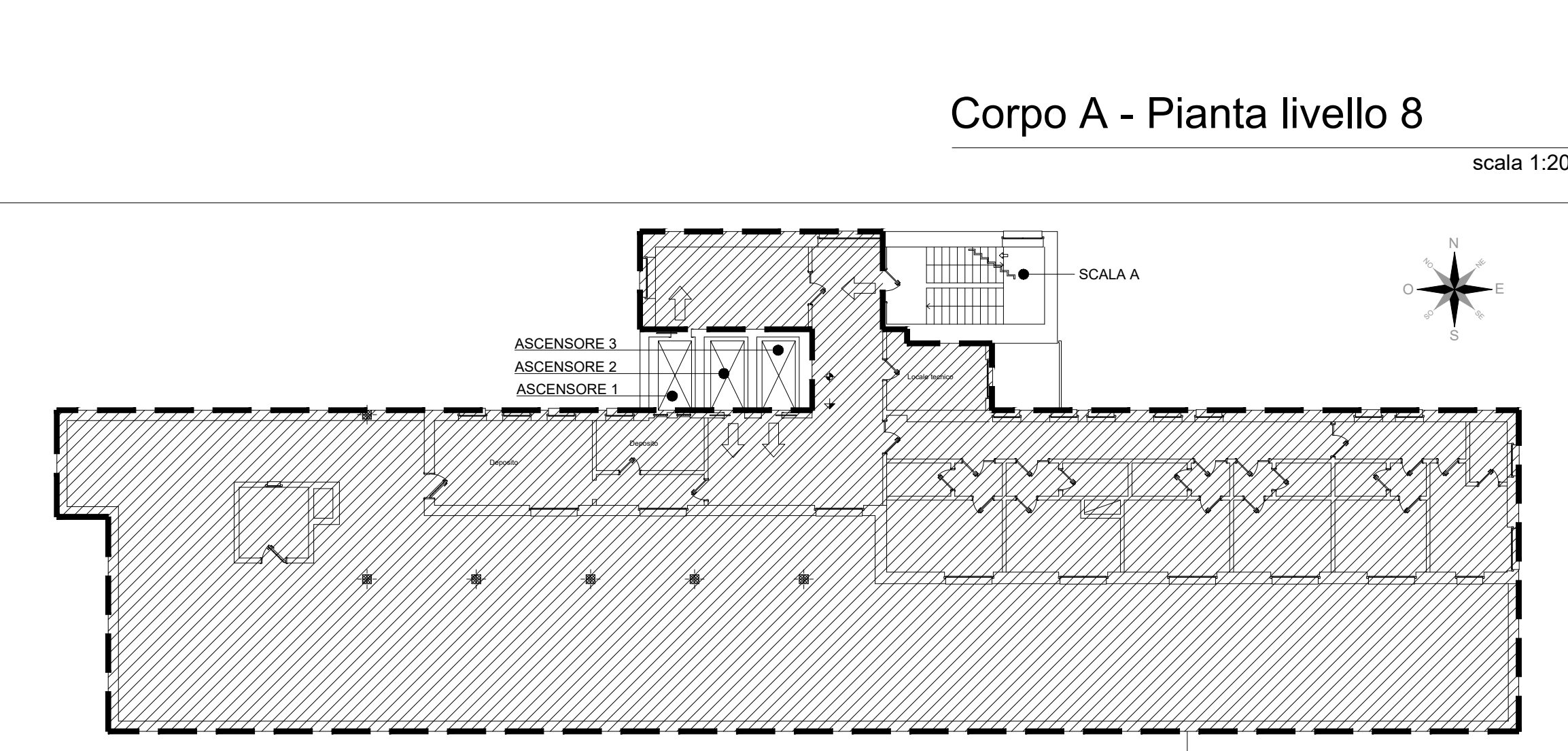
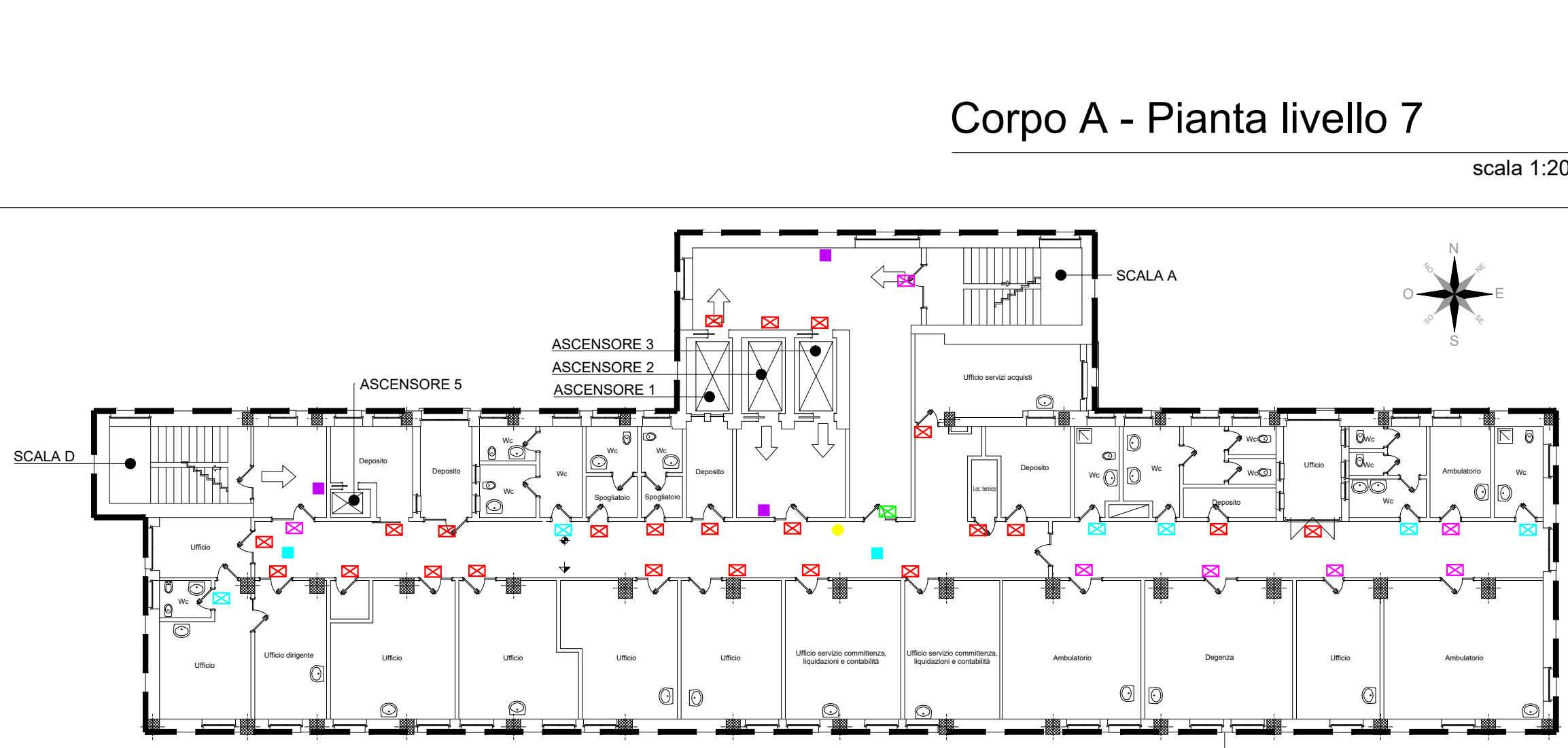
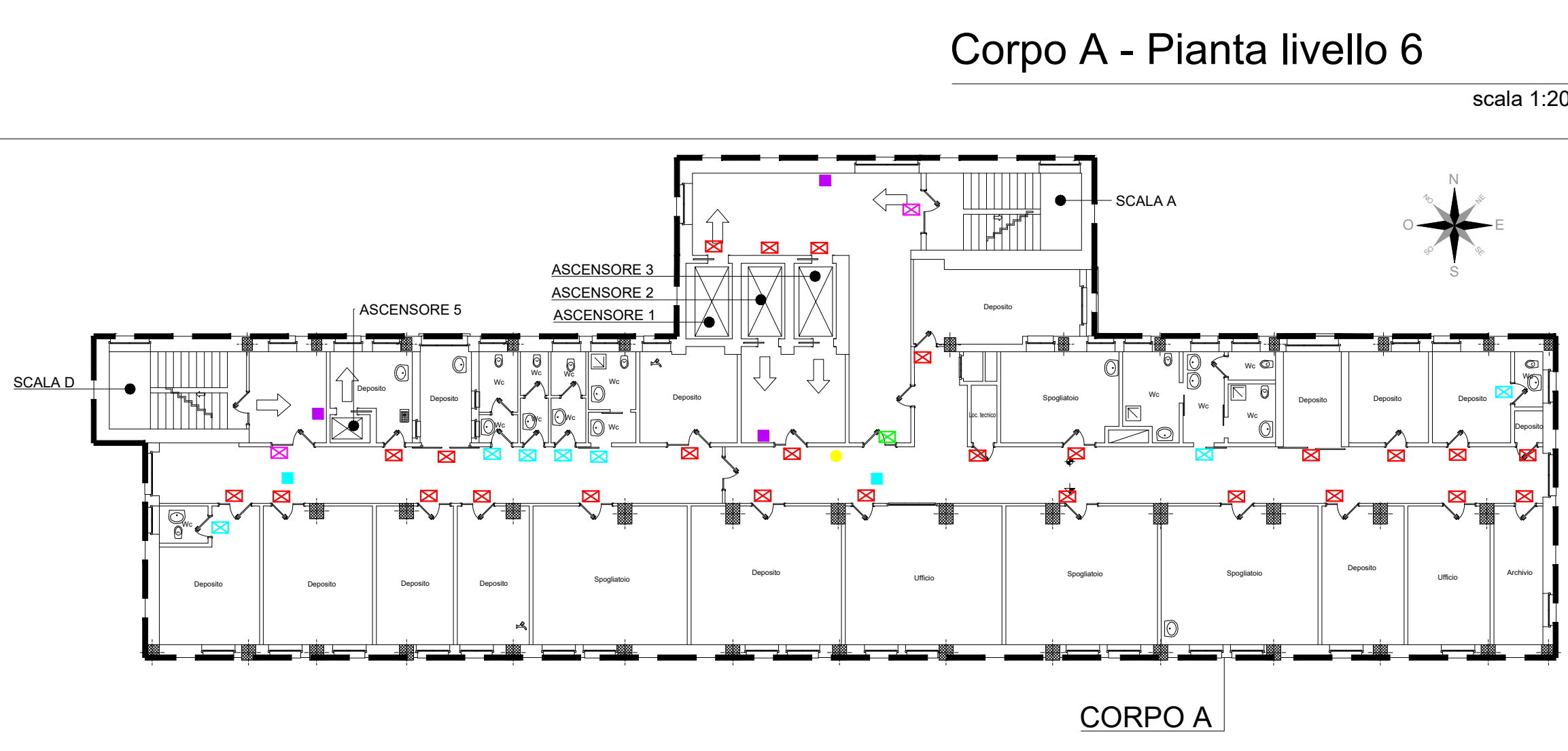
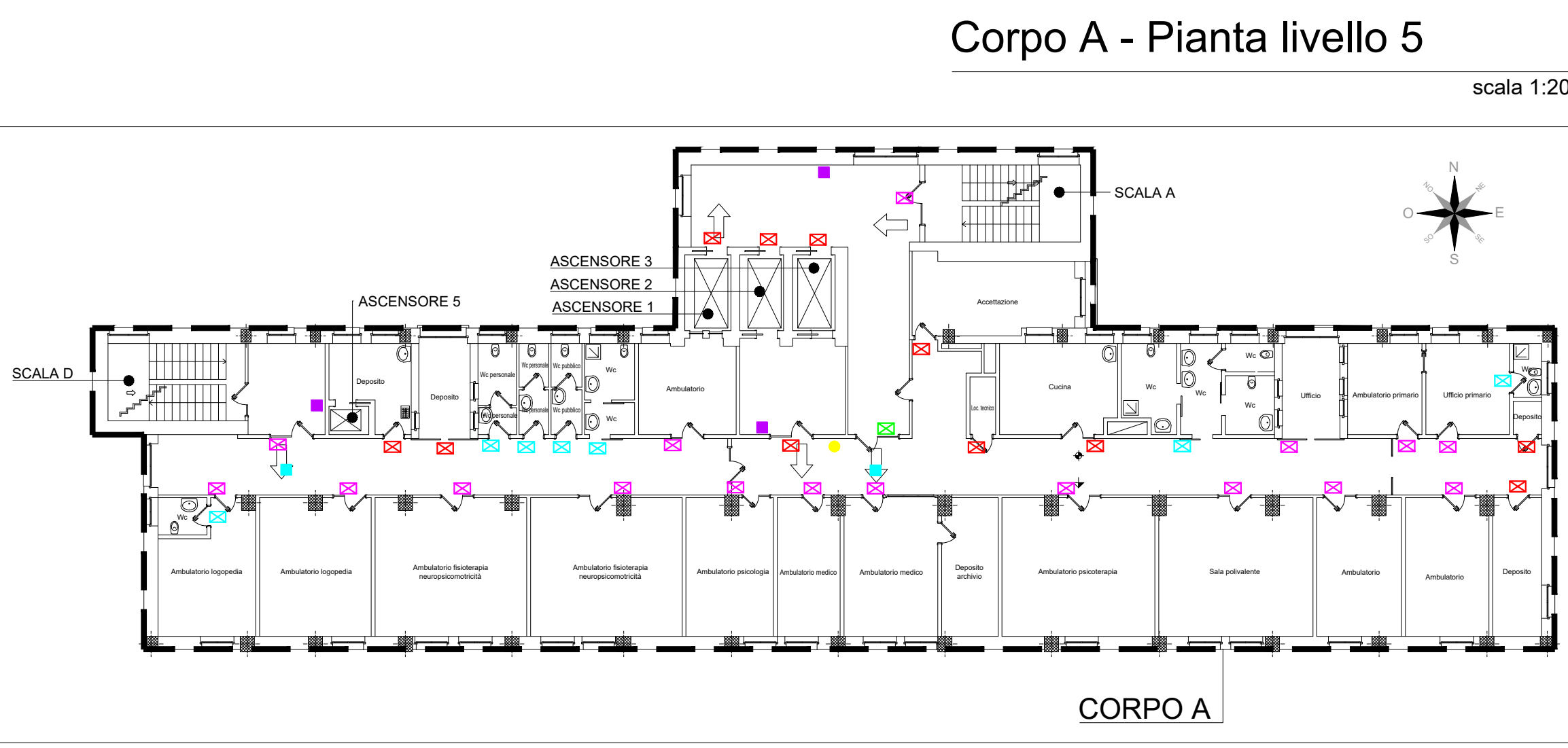
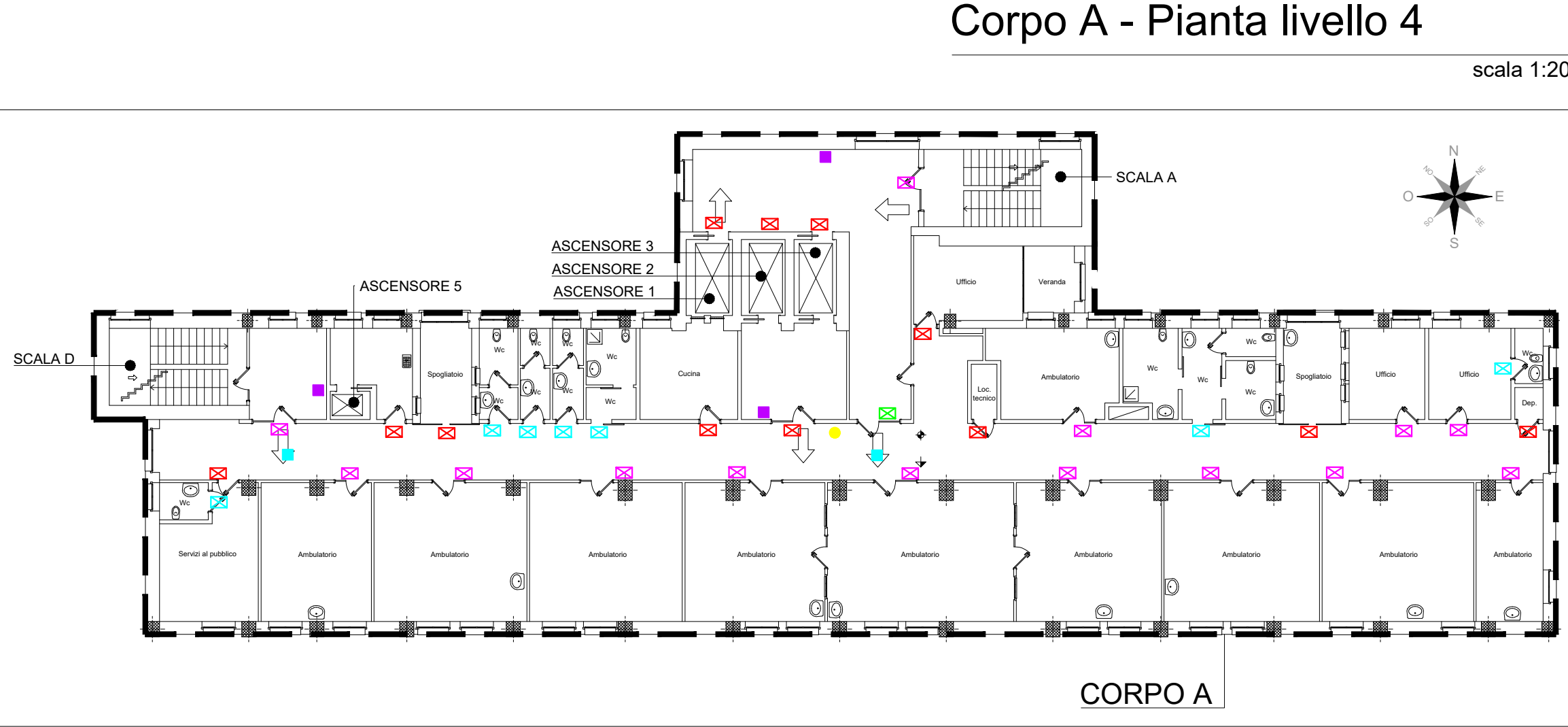
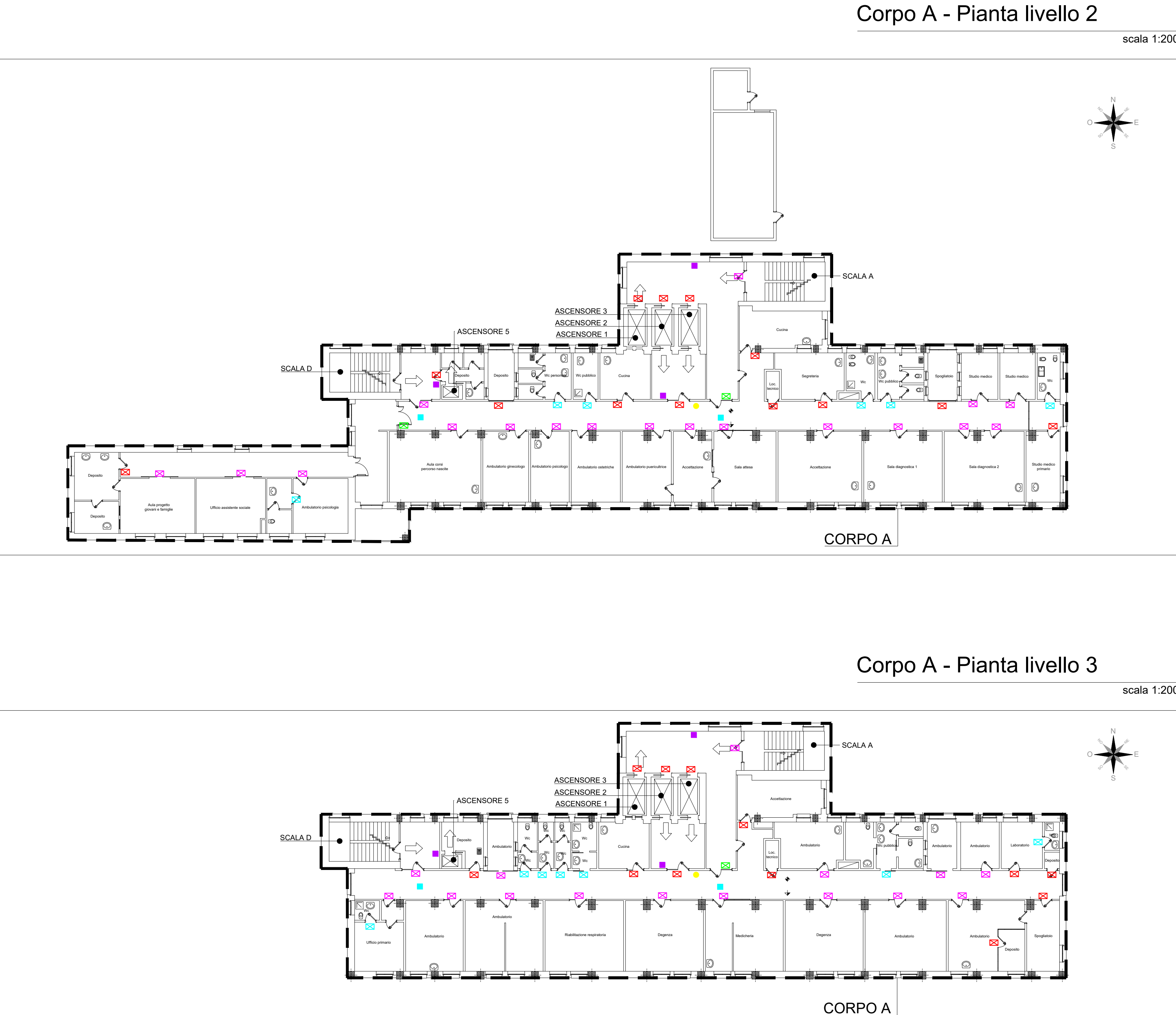
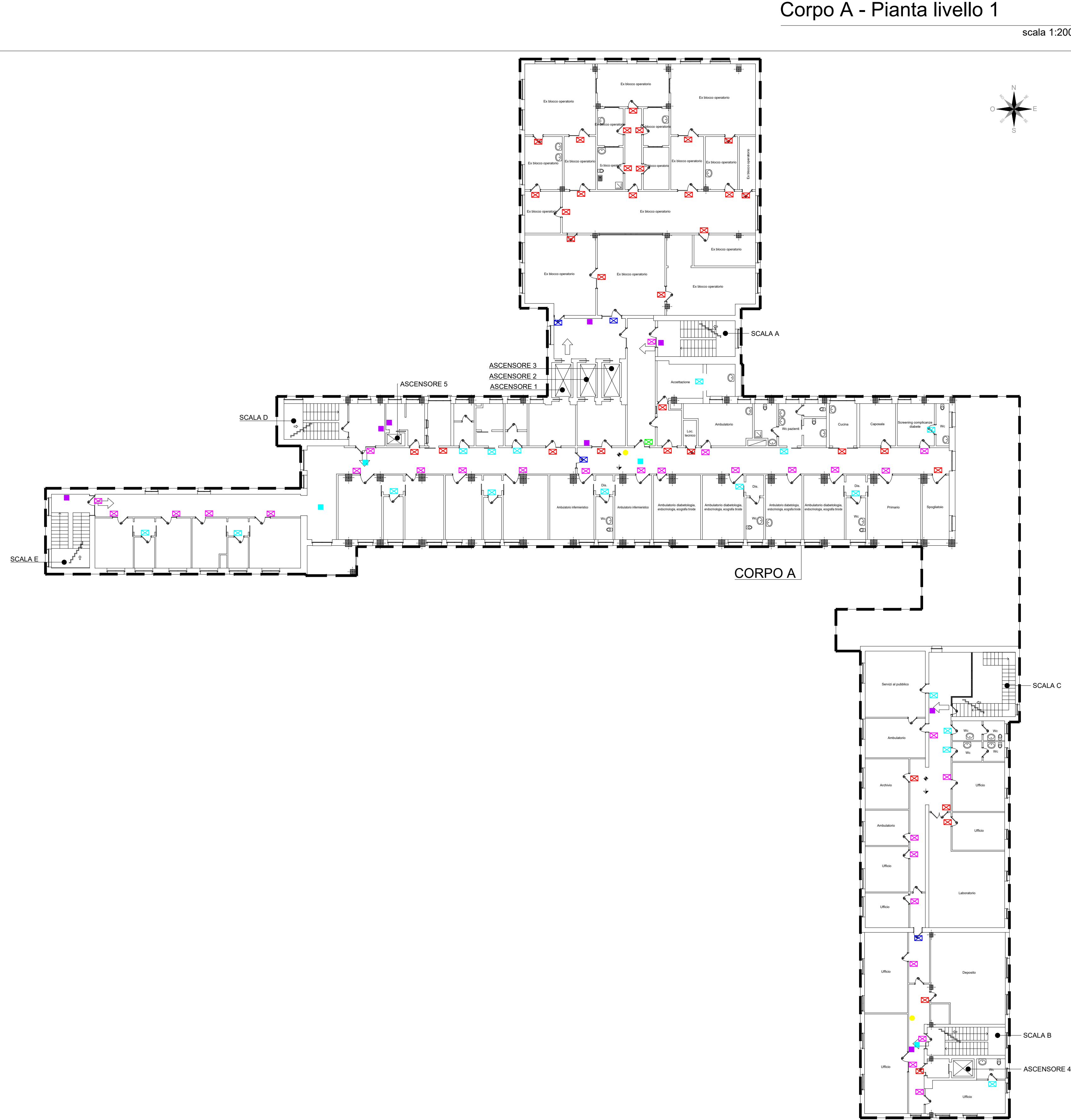
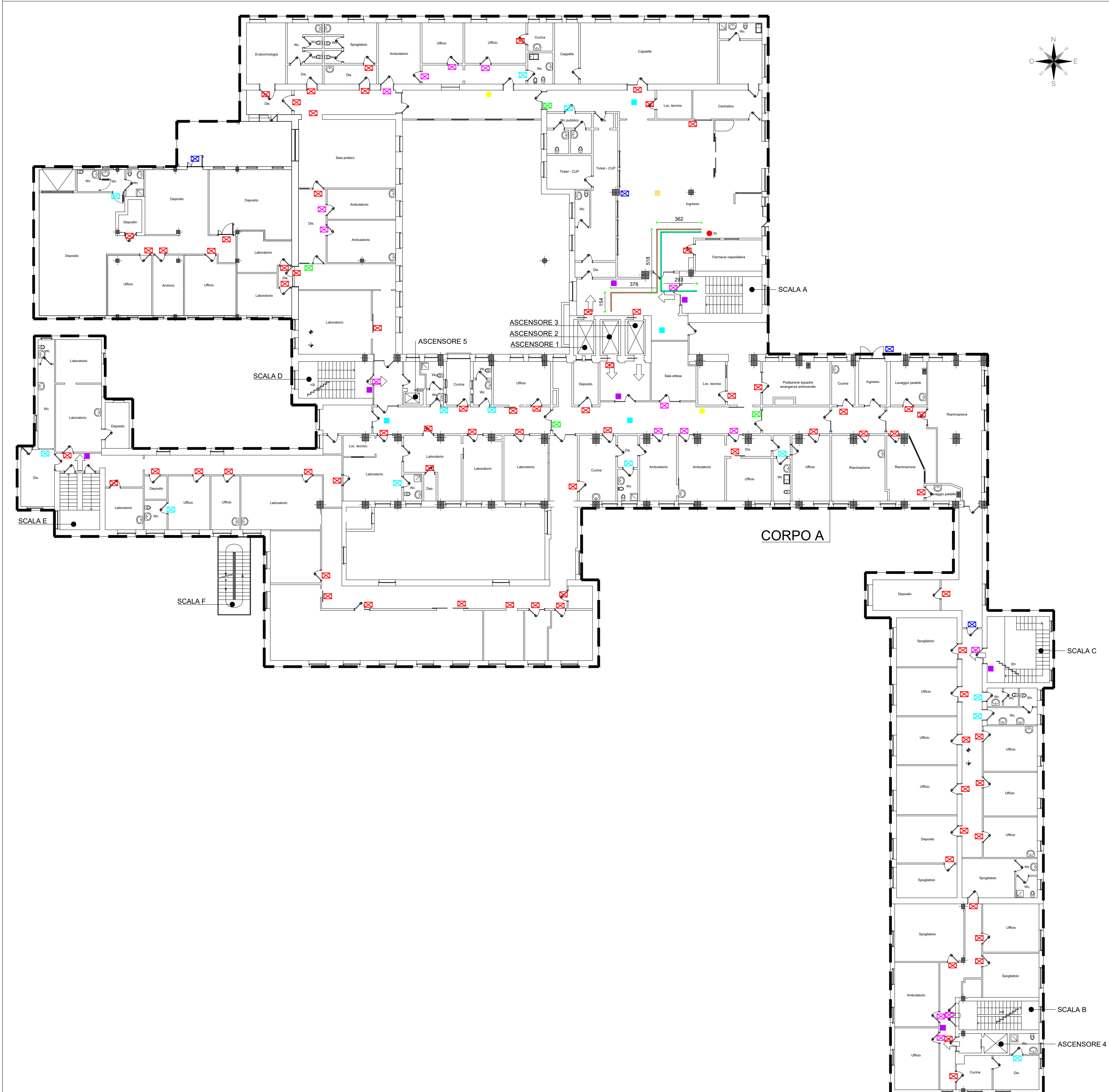
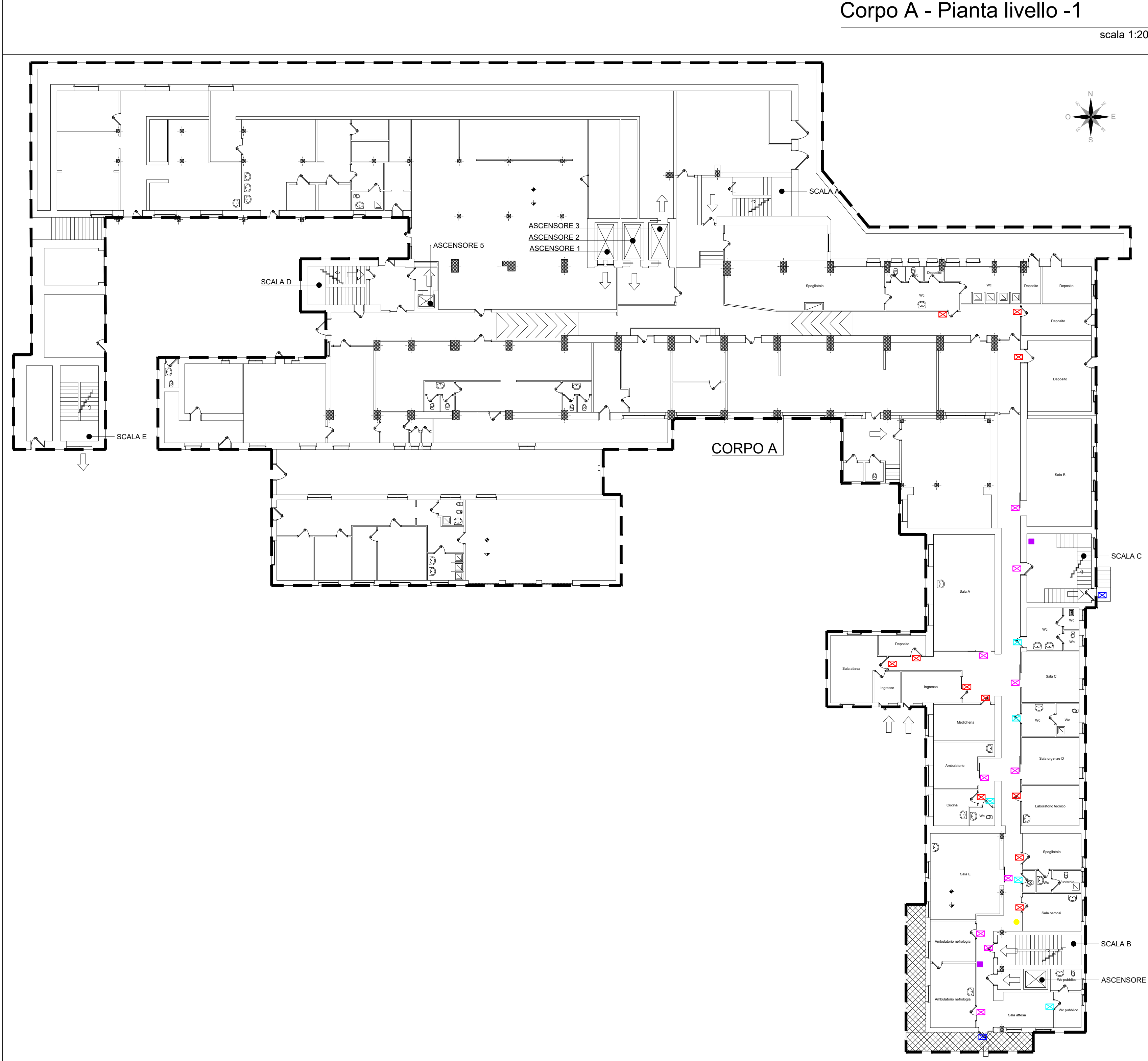


LEGENDA	
	Cartelli tipo T
	Cartelli tipo F
	Cartelli tipo R
	Cartelli tipo W
	Cartelli tipo Q
	Cartelli tipo A
	Cartelli tipo B
	Cartelli tipo S
	Cartelli tipo C
	Cartelli tipo M
	Cartelli tipo Z01
	Cartelli tipo Z02
	Cartelli indicativi interni
	Cartelli direzionali esterni
	Cartelli informativi ingresso
	Cartelli di sicurezza (pericolo o pericoli)
	Cartelli di piano esterni
	Cartelli di sospesi interni
	Cartelli a bandiera interni
	Cartelli sovrapposti interni
	Bancheca
	Cartelli informativi di spazio interni
	Cartelli fuori porta
	Cartelli informativi di servizio interni

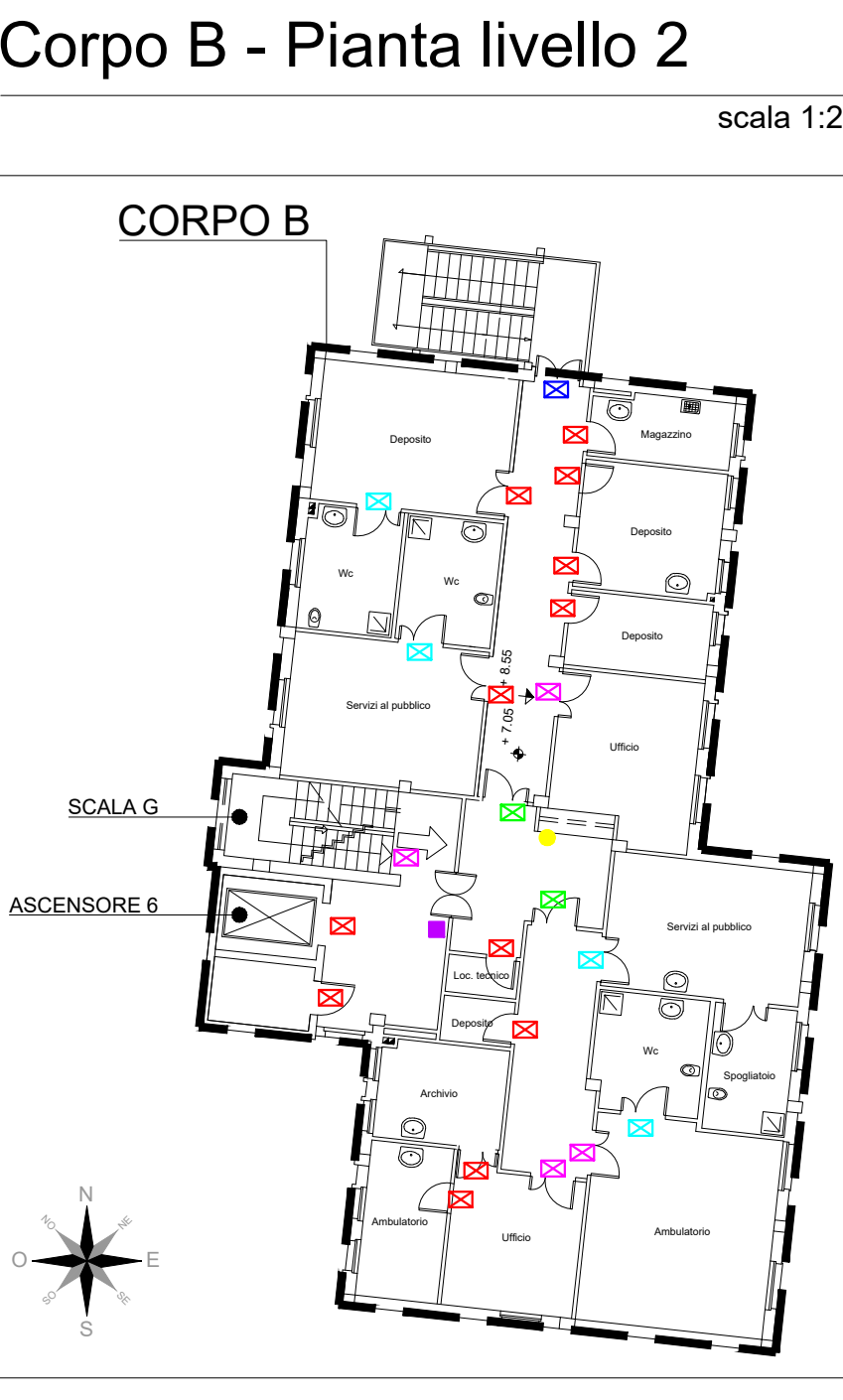
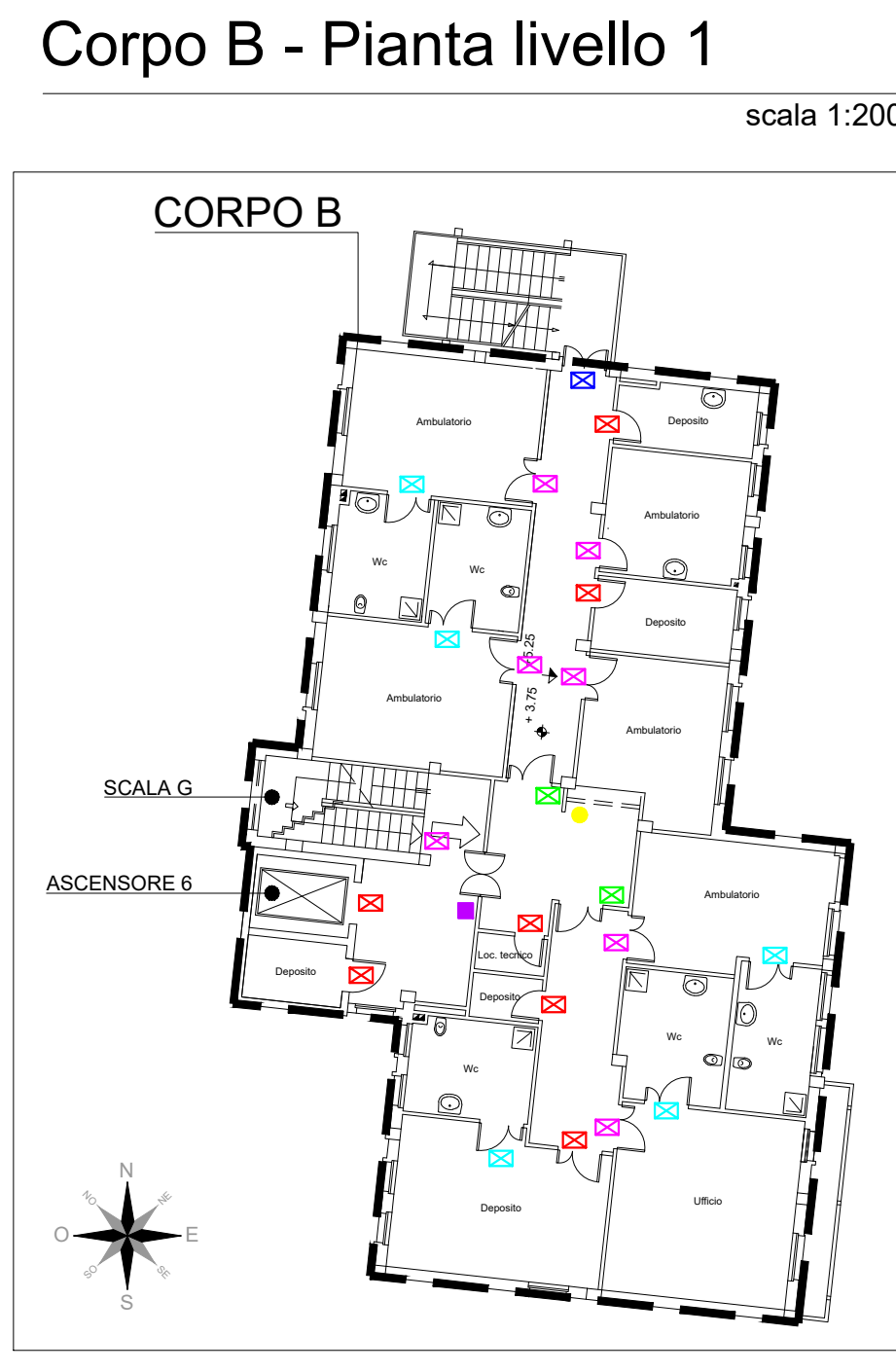
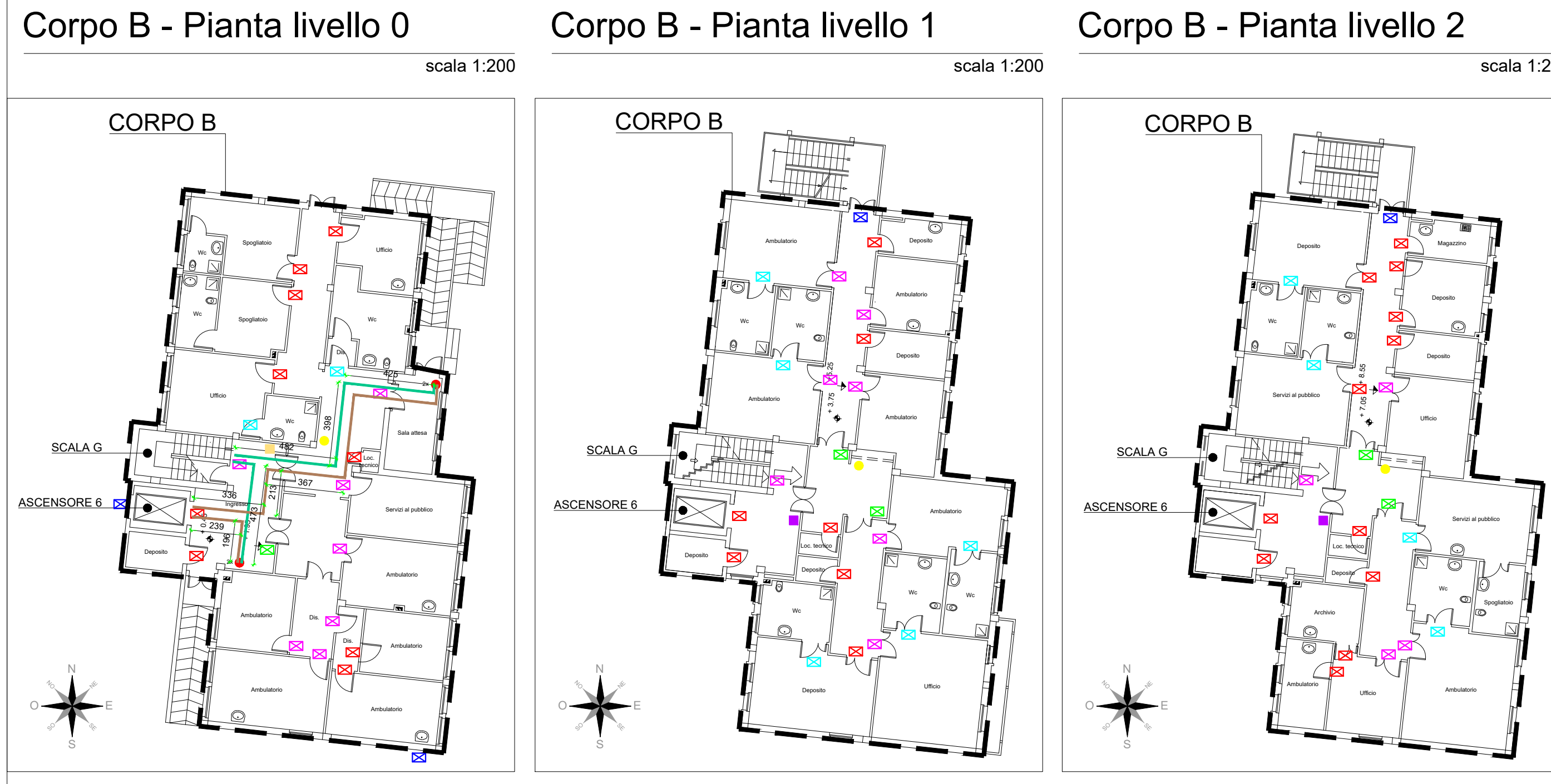
Planimetria generale identificazione corpi di fabbrica



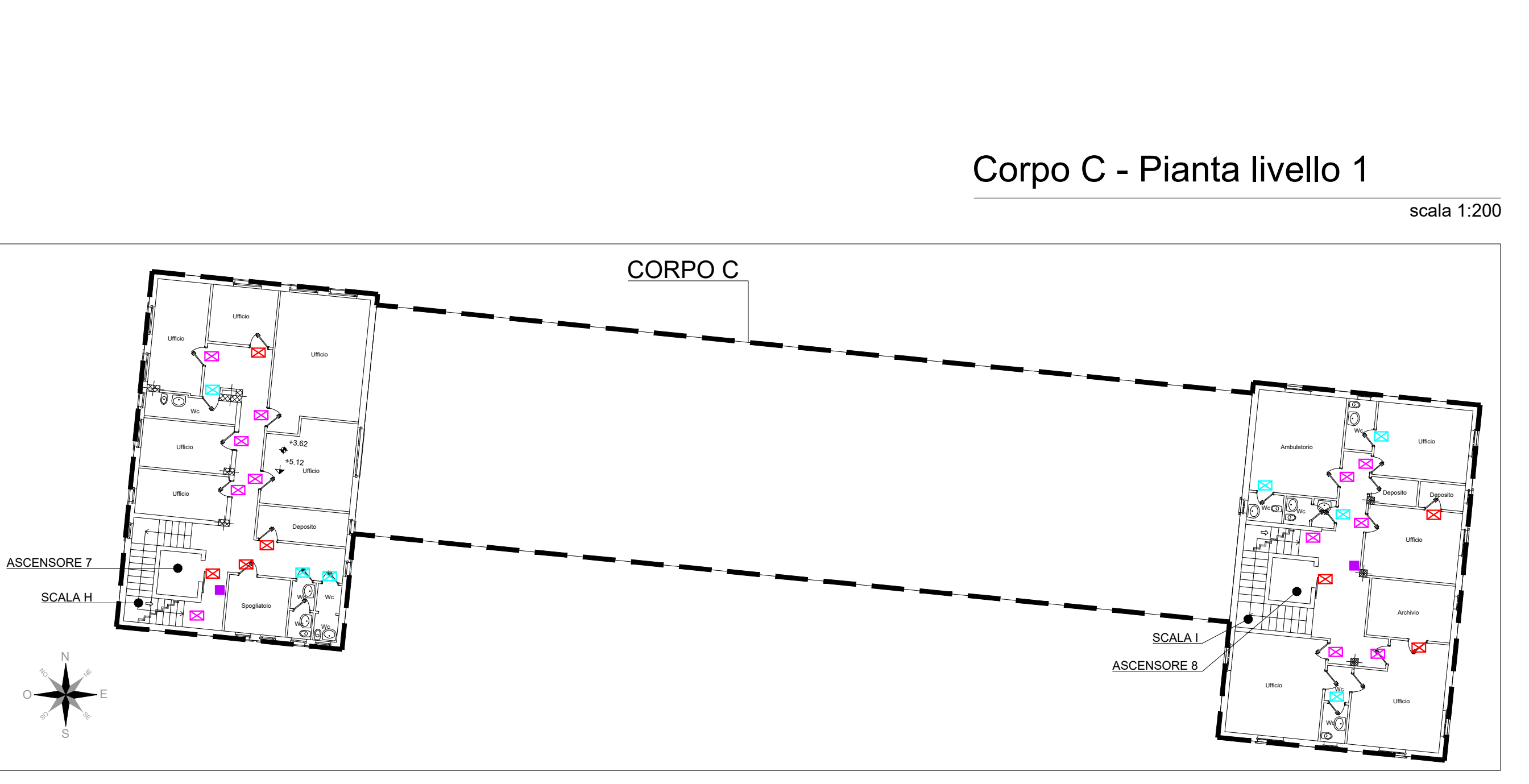
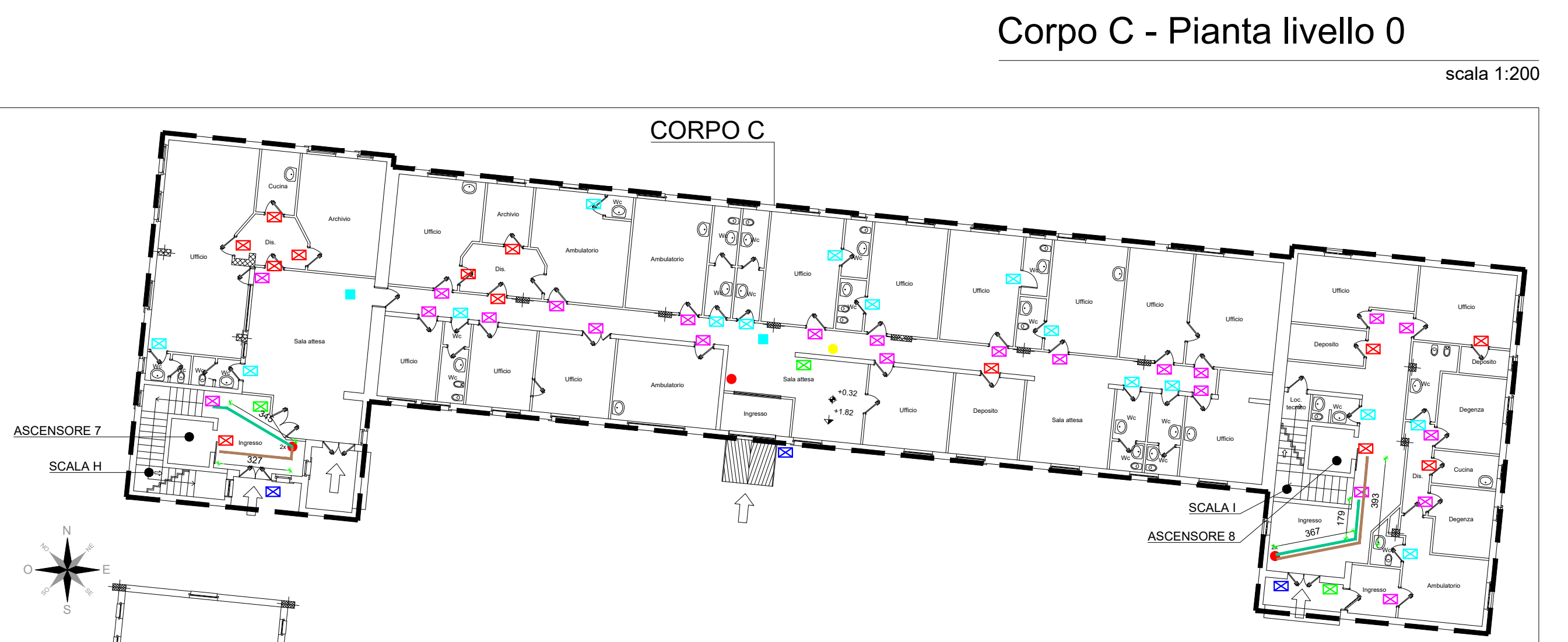
CORPO A



CORPO B



CORPO C



**PROGETTO ESECUTIVO**

Progettisti:  
ing. Francesco Auteri

Comitente:  
**ATS Sardegna**  
Area tecnica Oristano-Carbonia-Sanuri  
Via Dalmata, 8/3  
09013 Carbonia (CI) - ITALIA

IRag.  
Geom. Dario Scarpa

Scale:  
1:200

Data:  
Luglio 2020

Opera:  
**RIFACIMENTO E OMOGENEIZZAZIONE SEGNALETICA ASL 7 - PROGETTO DI FORNITURA E POSA IN OPERA**

Appartamenti:  
.....

Disegni:  
CARTELLONISTICA INTERNA  
Planimetrie livelli ospedale Santa Barbara - Corpi A, B e C

02<sub>d1</sub>

000449

STUDIO TECNICO ING. AUTERI FRANCESCO  
C.so Venezia 10 - 09013 Carbonia (CI) - ITALIA  
tel. 070/2400000 - fax 070/2400001  
www.studiotecnicoauteri.it